

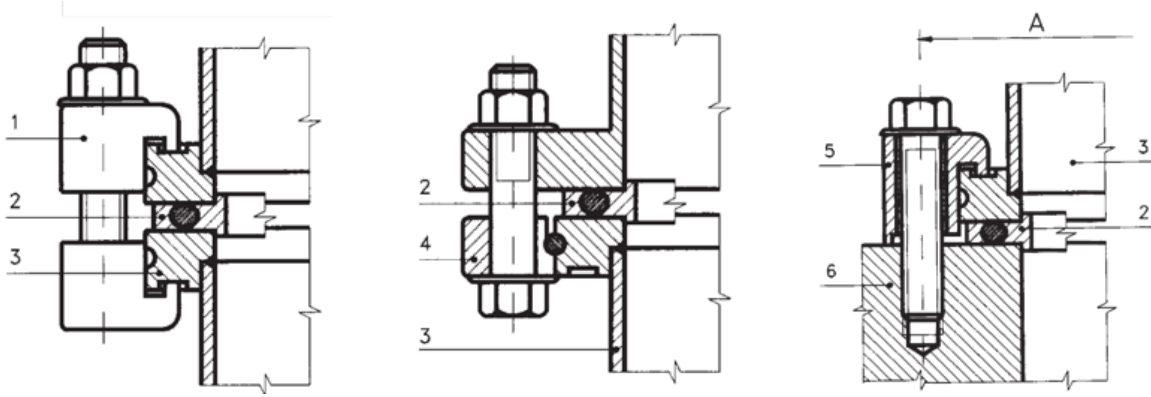
Pneurop ISO Flanges



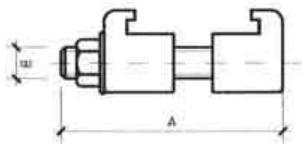
- Vacuum rated to 10^{-7} mbar with O-rings and to 10^{-9} mbar with metal gaskets.
- Temperature rated to over 200° C (maximum)

- 1) Claw grip
- 2) Centering ring
- 3) Flangie
- 4) Wall clamp
- 5) Rotary flange
- 6) Wall

DN	N° FORI	A	VITE	DN	N° FORI	A	VITE
10	4	110	M8 X 30	200	12	260	M10 X 35
80	8	125	M8 X 30	250	12	310	M10 X 35
100	8	145	M8 X 30	320	12	395	M12 X 40
125	8	175	M10 X 35	400	16	480	M12 X 40
160	8	200	M10 X 35	500	16	580	M12 X 50

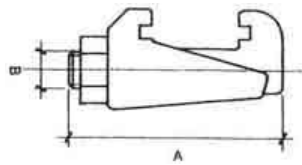


Aluminium clamping jaw



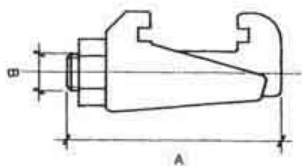
DN-ISO	A	B	C	D	Code
63/100	60	M9	-	-	0400
160/250	60	M10	-	-	0401
320/500	70	M12	-	-	0402

Galvanized steel clamping jaw



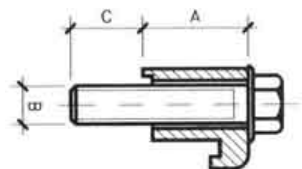
DN-ISO	A	B	C	D	Code
63/250	60	M10	-	-	0410
320/500	70	M12	-	-	0411
630	85	M12	-	-	0412

Aisi 304 clamping jaw



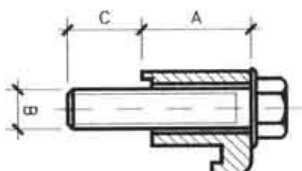
DN-ISO	A	B	C	D	Code
63/250	60	M10	-	-	0410-SS
320/500	70	M12	-	-	0411-SS
630	85	M12	-	-	0412-SS

Aluminium wall clamping jaw



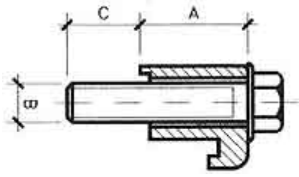
DN-ISO	A	B	C	D	Code
63/100	23	M8	12	-	0420
160/250	23	M10	12	-	0421
320	30	M12	20	-	0422
400/500	30	M12	20	-	0423

Galvanized steel wall clamping jaw



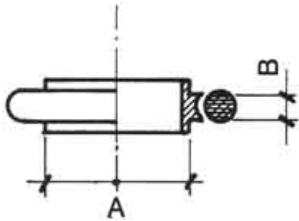
DN-ISO	A	B	C	D	Code
63/100	23	M8	12	-	5420
160/250	23	M10	12	-	5421
320	30	M12	20	-	5422
400/500	30	M12	20	-	5423

Aisi 304 wall clamping jaw



DN-ISO	A	B	C	D	Code
63/100	23	M8	12	-	0420-SS
160/250	23	M10	12	-	0421-SS
320	30	M12	20	-	0422-SS
400/500	30	M12	20	-	0423-SS
630	41	M12	20	-	0424-SS

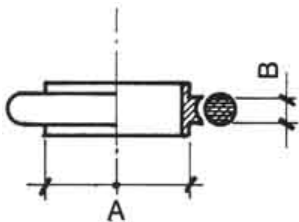
Aisi 304 centering ring



NBR O-Ring

DN-ISO	A	B	C	D	Code
63	70	3,9	-	-	5440
80	83	3,9	-	-	5441
100	102	3,9	-	-	5442
160	153	3,9	-	-	5444
200	213	3,9	-	-	5445
250	261	3,9	-	-	5446
320	318	5,6	-	-	5447
400	400	5,6	-	-	5448
500	501	5,6	-	-	5449
630	651	5,6	-	-	5443

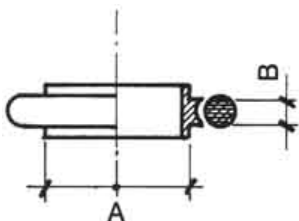
Aisi 304 centering ring



VITON® O-Ring

DN-ISO	A	B	C	D	Code
63	70	3,9	-	-	5430
80	83	3,9	-	-	5431
100	102	3,9	-	-	5432
160	153	3,9	-	-	5434
200	213	3,9	-	-	5435
250	261	3,9	-	-	5436
320	318	5,6	-	-	5437
400	400	5,6	-	-	5438
500	501	5,6	-	-	5439
630	651	5,6	-	-	5433

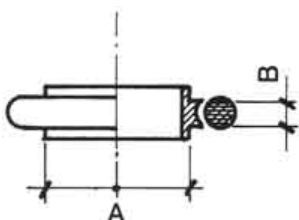
Aluminium centering ring



NBR O-Ring

DN-ISO	A	B	C	D	Code
63	70	3,9	-	-	0440
80	83	3,9	-	-	0441
100	102	3,9	-	-	0442
160	153	3,9	-	-	0444
200	213	3,9	-	-	0445
250	261	3,9	-	-	0446
320	318	5,6	-	-	0447
400	400	5,6	-	-	0448
500	501	5,6	-	-	0449
630	651	5,6	-	-	0443

Aluminium centering ring

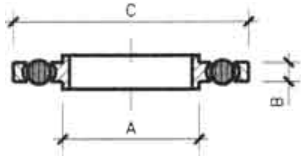


VITON® O-Ring

DN-ISO	A	B	C	D	Code
63	70	3,9	-	-	0430
80	83	3,9	-	-	0431
100	102	3,9	-	-	0432
160	153	3,9	-	-	0434
200	213	3,9	-	-	0435
250	261	3,9	-	-	0436
320	318	5,6	-	-	0437

400	400	5,6	-	-	0438
500	501	5,6	-	-	0439
630	651	5,6	-	-	0433

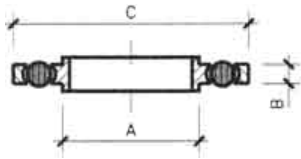
Centering ring with support / ext. Alum. int. Aisi 304



NBR O-Ring

DN-ISO	A	B	C	D	Code
63	70	3,9	95	-	6440
80	83	3,9	110	-	6441
100	102	3,9	130	-	6442
160	153	3,9	180	-	6444
200	213	3,9	240	-	6445
250	261	3,9	290	-	6446

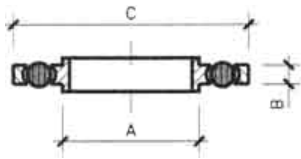
Centering ring with support / ext. Alum. int. Aisi 304



VITON® O-Ring

DN-ISO	A	B	C	D	Code
63	70	3,9	95	-	6430
80	83	3,9	110	-	6431
100	102	3,9	130	-	6432
160	153	3,9	180	-	6434
200	213	3,9	240	-	6435
250	261	3,9	290	-	6436

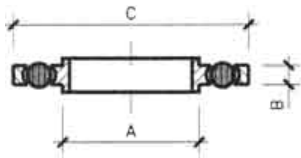
Centering ring with support / ext. Alum. int. Aisi Alum.



NBR O-Ring

DN-ISO	A	B	C	D	Code
63	70	3,9	95	-	7440
80	83	3,9	110	-	7441
100	102	3,9	130	-	7442
160	153	3,9	180	-	7444
200	213	3,9	240	-	7445
250	261	3,9	290	-	7446

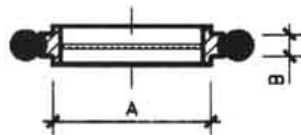
Centering ring with support / ext. Alum. int. Aisi Alum.



VITON® O-Ring

DN-ISO	A	B	C	D	Code
63	70	3,9	95	-	7430
80	83	3,9	110	-	7431
100	102	3,9	130	-	7432
160	153	3,9	180	-	7434
200	213	3,9	240	-	7435
250	261	3,9	290	-	7436

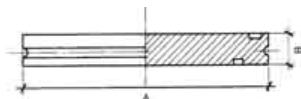
Aisi 304 centering ring with metallic grid



VITON® O-Ring

DN-ISO	A	B	C	D	Code
63	70	3,9	-	-	8430
80	83	3,9	-	-	8431
100	102	3,9	-	-	8432
160	153	3,9	-	-	8434
200	213	3,9	-	-	8435
250	261	3,9	-	-	8436

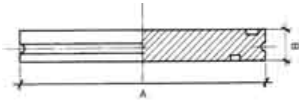
Aisi 304 blind flange



DN-ISO	A	B	C	D	Code
63	95	12	-	-	0450
80	110	12	-	-	0451
100	130	12	-	-	0452
160	180	12	-	-	0454
200	240	12	-	-	0455

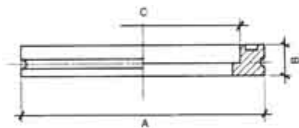
250	290	12	-	-	0456
320	370	17	-	-	0457
400	450	17	-	-	0458
500	550	17	-	-	0459
630	690	22	-	-	0453

Aisi 316 blind flange



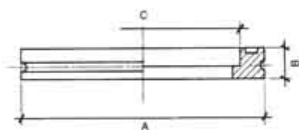
DN-ISO	A	B	C	D	Code
63	95	12	-	-	0450-316
80	110	12	-	-	0451-316
100	130	12	-	-	0452-316
160	180	12	-	-	0454-316
200	240	12	-	-	0455-316
250	290	12	-	-	0456-316
320	370	17	-	-	0457-316
400	450	17	-	-	0458-316
500	550	17	-	-	0459-316
630	690	22	-	-	0453-316

Aisi 304 blind soldering flange



DN-ISO	A	B	C	D	Code
63	95	12	70	-	0460-70
63	95	12	76	-	0460-76
80	110	12	88,9	-	0461-89
100	130	12	102	-	0462-102
100	130	12	104	-	0462-104
100	130	12	108	-	0462-108
160	180	12	154	-	0464-154
160	180	12	159	-	0464-159
200	240	12	204	-	0465-204
200	240	12	219	-	0465-219
250	290	12	254	-	0466-254
250	290	12	267	-	0466-267
320	370	17	324	-	0467
400	450	17	406	-	0468
500	550	17	508	-	0469
630	690	22	660	-	0463

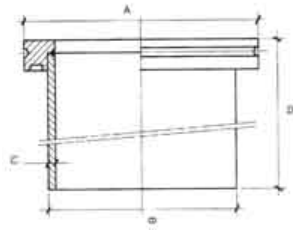
Aisi 316 blind soldering flange



DN-ISO	A	B	C	D	Code
63	95	12	76	-	0460-76-316
80	110	12	88.9	-	0461-89-316
100	130	12	102	-	0462-102-316
100	130	12	104	-	0462-104-316
100	130	12	108	-	0462-108-316
160	180	12	154	-	0464-154-316
160	180	12	159	-	0464-159-316
200	240	12	204	-	0465-204-316
200	240	12	219	-	0465-219-316
250	290	12	254	-	0466-254-316
250	290	12	267	-	0466-267-316
320	370	17	324	-	0467-316
400	450	17	406	-	0468-316
500	550	17	508	-	0469-316
630	690	22	660	-	0463-316

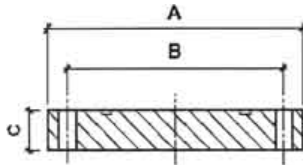
Aisi 304 flange with tube

DN-ISO	A	B	C	D	Code
63	95	76	2	100	0470



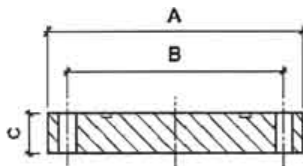
80	110	89	2	100	0471
100	130	104	2	100	0472-104
100	130	108	3	100	0472-108
160	180	154	2	100	0474-154
160	180	159	3	100	0474-159
200	240	219	3	100	0475
250	290	267	3	100	0476
320	370	324	3	150	0477
400	450	406	3	150	0478
500	550	508	3	150	0479
630	690	660	4	150	0473

Aisi 304 blind flange ISO F



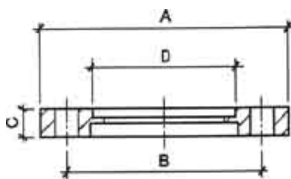
DN-ISO	A	B	C	D	Code
63	130	110	12	-	6450
80	145	125	12	-	6451
100	165	145	12	-	6452
160	225	200	16	-	6453
200	285	260	16	-	6454
250	335	310	16	-	6455
320	425	395	20	-	6456
400	510	480	20	-	6457
500	610	580	20	-	6458
630	750	720	24	-	6459

Aisi 316 blind flange ISO F



DN-ISO	A	B	C	D	Code
63	130	110	12	-	6450-316
80	145	125	12	-	6451-316
100	165	145	12	-	6452-316
160	225	200	16	-	6453-316
200	285	260	16	-	6454-316
250	335	310	16	-	6455-316
320	425	395	20	-	6456-316
400	510	480	20	-	6457-316
500	610	580	20	-	6458-316
630	750	720	24	-	6459-316

Aisi 304 soldering flange ISO F



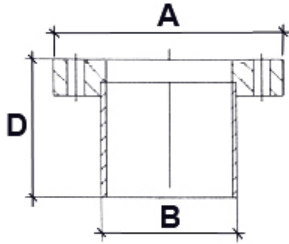
DN-ISO	A	B	C	D	Code
63	130	110	12	76	6460
80	145	125	12	89	6461
100	165	145	12	104	6462-104
100	165	145	12	108	6462
160	225	200	16	154	6463-154
160	225	200	16	159	6463
200	285	260	16	219	6464
250	335	310	16	267	6465
320	425	395	20	324	6466
400	510	480	20	406	6467
500	610	580	20	508	6468
630	750	720	24	660	6469

Aisi 316 soldering flange ISO F

DN-ISO	A	B	C	D	Code
63	130	110	12	76	6460-316
80	145	125	12	89	6461-316
100	165	145	12	108	6462-316
160	225	200	16	159	6463-316

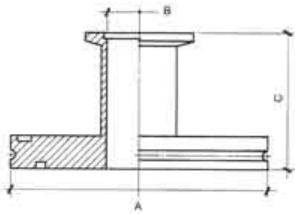
200	285	260	16	219	6464-316
250	335	310	16	267	6465-316
320	425	395	20	324	6466-316
400	510	480	20	406	6467-316
500	610	580	20	508	6468-316
630	750	720	24	660	6469-316

Aisi 304 flange with tube ISO F



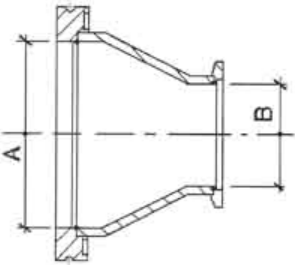
DN-ISO	A	B	C	D	Code
63	130	76	2	100	6470
80	145	89	2	100	6471
100	165	104	2	100	6472-104
100	165	108	3	100	6472-108
160	225	154	2	100	6473-154
160	225	159	3	100	6473-159
200	285	219	3	100	6474
250	335	267	3	100	6475
320	425	324	3	150	6476
400	510	406	3	150	6477
500	610	508	3	150	6478
630	750	660	4	150	6479

Aisi 304 ISO adapter



DN-ISO	A	B	C	D	Code
63/25	95	24	50	-	0480
63/40	95	41	50	-	0481
63/50	95	51	50	-	0482
80/40	110	41	50	-	0483
80/50	110	51	50	-	0484
100/25	130	24	50	-	0485
100/40	130	41	50	-	0486
100/50	130	51	50	-	0487
160/40	180	41	50	-	0488
160/50	180	51	50	-	0489

Aisi 304 ISO conical adapter



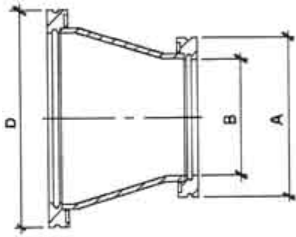
DN-ISO	A	B	C	D	Code
63/40	70	40	-	-	5481
63/50	70	50	-	-	5482
80/40	83	40	-	-	5483
80/50	83	50	-	-	5484
100/40	102	40	-	-	5486
100/50	102	50	-	-	5487

Aisi 304 ISO reduction

DN-ISO	A	B	C	D	Code
80/63	95	72	80	110	0490
100/63	95	72	80	130	0491
100/80	110	85	80	130	0492
160/63	95	72	80	180	0493
160/80	110	85	80	180	0499
160/100	130	100	80	180	0494
200/100	130	100	90	240	0495

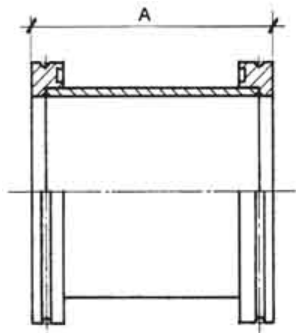
200/160	180	150	90	240	0496
250/160	180	150	90	290	0497
250/200	240	213	90	290	0498

Aisi 304 conical ISO reduction



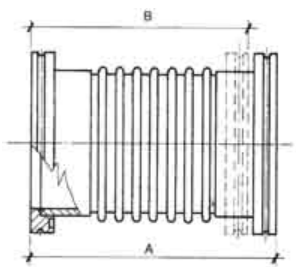
DN-ISO	A	B	C	D	Code
80/63	95	70	-	110	5490
100/63	95	70	-	130	5491
100/80	110	83	-	130	5492
160/63	95	70	-	180	5493
160/80	110	83	-	180	5499
160/100	130	102	-	180	5494
200/160	180	150	-	240	5495

Aisi 304 straight junction



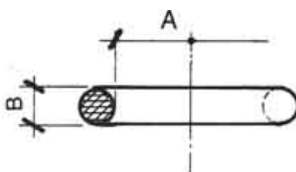
DN-ISO	A	B	C	D	Code
63	88	-	-	-	0500
80	108	-	-	-	0501
100	108	-	-	-	0502
160	138	-	-	-	0504
200	200	-	-	-	0505
250	208	-	-	-	0506
320	300	-	-	-	0507
400	350	-	-	-	0508
500	400	-	-	-	0509

Aisi 304 ISO K bellows



DN-ISO	A	B	C	D	Code
63	130	-	-	-	0530
63	250	-	-	-	5530
80	130	-	-	-	0531
80	250	-	-	-	5531
100	130	-	-	-	0532
100	250	-	-	-	5532
160	150	-	-	-	0534
160	250	-	-	-	5534
200	230	-	-	-	0535
250	250	-	-	-	0536
320	300	-	-	-	0537
400	320	-	-	-	0538

ISO O-Ring

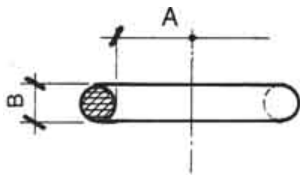


NBR O-Ring

DN-ISO	A	B	C	D	Code
63	75,6	5,34	-	-	0520
80	88,3	5,34	-	-	0521
100	107,2	5,34	-	-	0522
160	158,1	5,34	-	-	0524
200	215,3	5,34	-	-	0525

250	266	5,34	-	-	0526
320	316,9	7	-	-	0527
400	405,3	7	-	-	0528
500	506,9	7	-	-	0529
630	658,9	7	-	-	0523

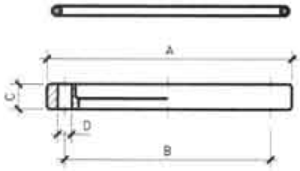
ISO O-Ring



VITON® O-Ring

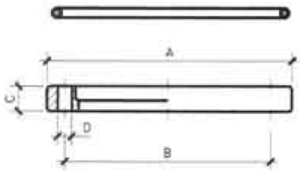
DN-ISO	A	B	C	D	Code
63	75,6	5,34	-	-	0510
80	88,3	5,34	-	-	0511
100	107,2	5,34	-	-	0512
160	158,1	5,34	-	-	0514
200	215,3	5,34	-	-	0515
250	266	5,34	-	-	0516
320	316,9	7	-	-	0517
400	405,3	7	-	-	0518
500	506,9	7	-	-	0519
630	658,9	7	-	-	0513

Aluminium revolving ISO flange



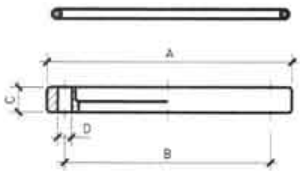
DN-ISO	A	B	C	D	Code
63	130	110	12	9	0540
80	145	125	12	9	0541
100	165	145	12	9	0542
160	225	200	16	11	0544
200	285	260	16	11	0545
250	335	310	16	11	0546

Galvanized steel ISO revolving flange



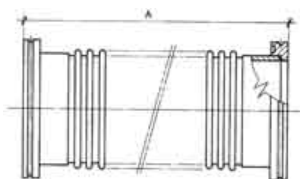
DN-ISO	A	B	C	D	Code
320	425	395	20	14	6547
400	510	480	20	14	6548
500	610	580	20	14	6549

Aisi 304 ISO revolving flange



DN-ISO	A	B	C	D	Code
63	130	110	12	9	5540
80	145	125	12	9	5541
100	165	145	12	9	5542
160	225	200	16	11	5544
200	285	260	16	11	5545
250	335	310	16	11	5546

Aisi 304 ISO flexible tube



DN-ISO	A	B	C	D	Code
63	250	-	-	-	0550
63	750	-	-	-	6556
63	500	-	-	-	0551
63	1000	-	-	-	0552
63	1500	-	-	-	5551
63	2000	-	-	-	5552
80	250	-	-	-	0553
80	500	-	-	-	0554
80	750	-	-	-	6557
80	1000	-	-	-	0555

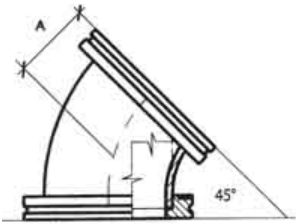
80	1500	-	-	-	5554
80	2000	-	-	-	5555
100	250	-	-	-	0556
100	500	-	-	-	0557
100	750	-	-	-	6558
100	1000	-	-	-	0558
100	1500	-	-	-	5557
100	2000	-	-	-	5558
160	250	-	-	-	6550
160	500	-	-	-	6551
160	750	-	-	-	6553
160	1000	-	-	-	6552
160	1500	-	-	-	6554
160	2000	-	-	-	6555

Aluminium ISO K window



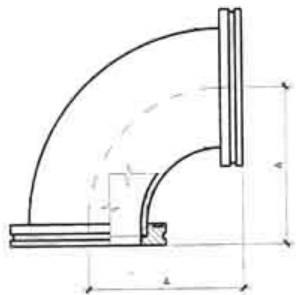
DN-ISO	A	B	C	D	Code
63	70	-	-	-	OB63
100	102	-	-	-	OB100
160	153	-	-	-	OB160
200	213	-	-	-	OB200

Aisi 304 ISO K curve 45° junction



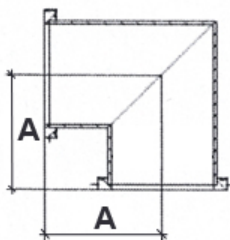
DN-ISO	A	B	C	D	Code
63	48	-	-	-	0560-45°
80	57	-	-	-	0561-45°
100	52	-	-	-	0562-45°
160	103	-	-	-	0564-45°
200	178	-	-	-	0565-45°
250	208	-	-	-	0566-45°

Aisi 304 ISO K curve 90° junction



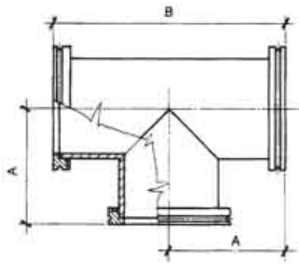
DN-ISO	A	B	C	D	Code
63	88	-	-	-	0560-90°
80	108	-	-	-	0561-90°
100	108	-	-	-	0562-90°
160	235	-	-	-	6564-90°

Aisi 304 ISO K 90° elbow junction



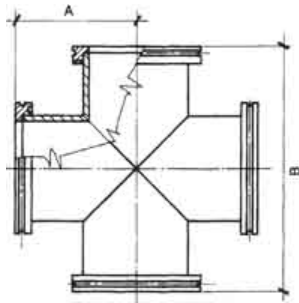
DN-ISO	A	B	C	D	Code
160	138	-	-	-	0564-90°
200	200	-	-	-	0565-90°
250	208	-	-	-	0566-90°
320	250	-	-	-	0567-90°

Aisi 304 ISO K tee junction



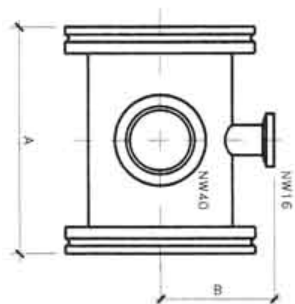
DN-ISO	A	B	C	D	Code
63	88	176	-	-	0570
80	108	216	-	-	0571
100	108	216	-	-	0572
160	138	276	-	-	0574
200	178	356	-	-	0575
250	208	416	-	-	0576
320	300	600	-	-	0577
400	300	600	-	-	0578

Aisi 304 ISO K cross junction



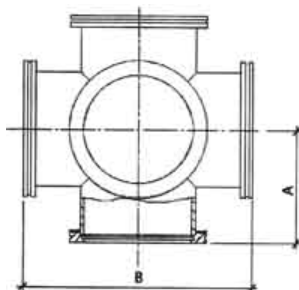
DN-ISO	A	B	C	D	Code
63	88	176	-	-	0580
80	108	216	-	-	0581
100	108	216	-	-	0582
160	138	276	-	-	0584
200	178	356	-	-	0585
250	208	416	-	-	0586

Aisi 304 ISO/KF cross reduction junction



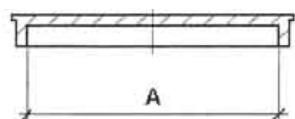
DN-ISO	A	B	C	D	Code
63	88	60	-	-	0590
80	108	65	-	-	0591
100	108	75	-	-	0592
160	138	100	-	-	0594
200	200	130	-	-	0595
250	208	155	-	-	0596

Aisi 304 6 way cross junction



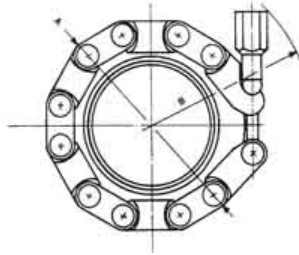
DN-ISO	A	B	C	D	Code
63	88	176	-	-	5580
80	108	216	-	-	5581
100	108	216	-	-	5582
160	138	276	-	-	5584
200	200	400	-	-	5585
250	208	416	-	-	5586

ISO K protection cap



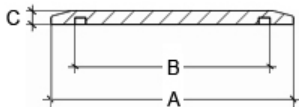
DN-ISO	A	B	C	D	Code
63	95	-	-	-	PV63
80	110	-	-	-	PV80
100	130	-	-	-	PVC100
160	180	-	-	-	PVC160
200	240	-	-	-	PVC200
250	290	-	-	-	PVC250

Non-magnetic aluminium ISO KF chain clamping collar



DN-ISO	A	B	C	D	Code
63	-	-	-	-	5020
80	-	-	-	-	5021
100	-	-	-	-	5022

Aisi 304 ISO KF blind flange



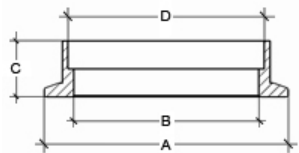
DN-ISO	A	B	C	D	Code
63	87	70	5	-	5450
80	114	83	12	-	5451
100	134	102	12	-	5452

Aisi 304 ISO KF soldering flange



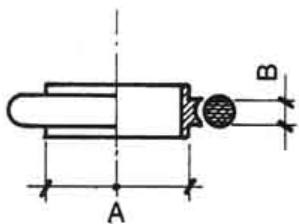
DN-ISO	A	B	C	D	Code
63	87	63	5	-	5460
80	114	88,9	12	-	5461
100	134	104	12	-	5462

Aisi 304 ISO KF pocket soldering flange



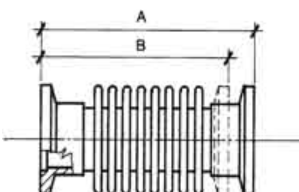
DN-ISO	A	B	C	D	Code
63	87	70	12	70	7460
80	114	83,3	20	88,9	7461
100	134	102	20	104	7462

Centering ring



DN-ISO	A	B	C	D	Code
63	70	3,9	-	-	5430
80	83	3,9	-	-	5431
100	102	3,9	-	-	5432

Aisi 304 ISO KF bellows



DN-ISO	A	B	C	D	Code
63	130	115	-	-	6530
80	130	115	-	-	6531
100	130	115	-	-	6532

