

# Intelligent Valve Positioner SRD991

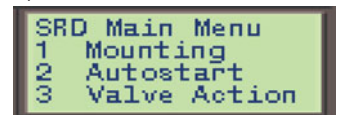


## SRD991 – Intelligent Control and User Friendly.

- Easy to operate, menu-driven graphical LCD
- Multilingual full text display, visible also with cover closed
- All parameters can be configured locally by push buttons
- Status and diagnostic messages displayed in LCD
- Advanced diagnostics for Valve predictive maintenance
- Suitable for safety applications up to SIL 3
- Partial Stroke Test (PST) for Emergency Shutdown applications
- HART-Protocol with only 420 Ohms load
- PROFIBUS-PA acc. to IEC 1158-2 based on FISCO
- FOUNDATION Fieldbus H1 acc. to IEC 1158-2 based on FISCO with PID, AO, 2xDI, DO function blocks and LAS functionality
- Infrared Interface for wireless communication
- Easy mounting to all linear and rotary actuators
- Options:
  - Housing in stainless steel
  - Limit switches and position transmitter
  - Gauge manifolds and volume boosters
  - Pressure sensors for supply air and outputs



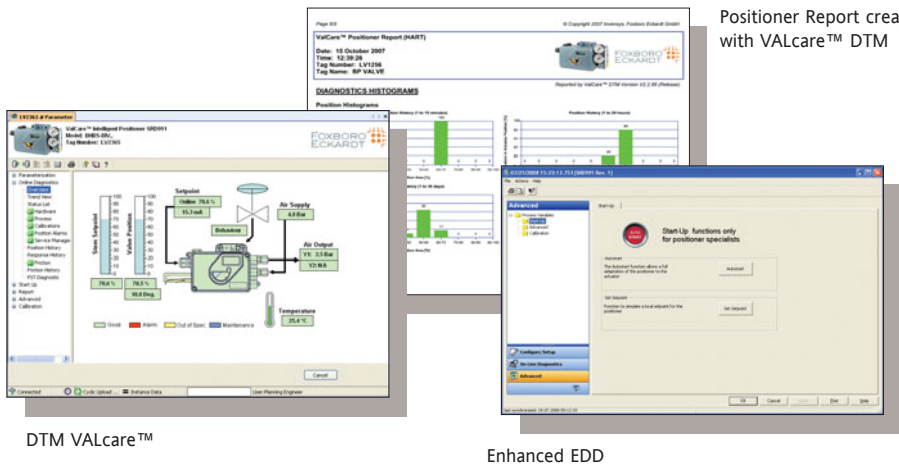
Operation



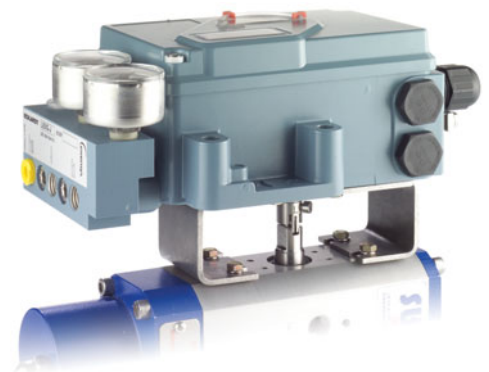
Configuration



Diagnosis report



Positioner Report created with VALcare™ DTM



Example for mounting on rotary actuators.

DTM VALcare™

Enhanced EDD

### Technical Data

The SRD991 offers the most advanced technology available on the market today.

This includes among others an infrared interface for wireless operation and configuration, a multi-lingual full-text graphic LCD and an availability with the choice of all in the process automation applied communication protocols. It offers enhanced applications and methods to analyze recorded stroke data.

The advanced diagnostic can be partially shown on the local LCD of the positioner or fully on a PC or a DCS workstation like IA Series System thanks to a DTM based software (VALcare or Valve Monitor).

The SRD991 has also the capability to control a Partial Stroke Test (PST) that offers operators a tool to identify the trouble-proof function of ESD (Emergency Shut Down) valves.

FOXBORO ECKARDT GmbH  
 Pragstrasse 82  
 D-70376 Stuttgart · Germany  
 Fon +49 (0)711 502-0  
 Fax +49 (0)711 502-597  
<http://www.foxboro-eckardt.com>  
 e-mail [salessupport@foxboro-eckardt.de](mailto:salessupport@foxboro-eckardt.de)

Intelligent	Autostart with self calibration Self-diagnostics Advanced diagnostics for valve predictive maintenance Configuration of characteristic curves Travel-stop and cut-off functions
without Communication	Setpoint 4-20 mA Load 300 Ohms
with Communication	HART Setpoint 4-20 mA Load 420 Ohms PROFIBUS PA and FOUNDATION Fieldbus H1 Fieldbus Protocol acc. to IEC 1158-2 (FISCO) Base current 10.5 mA ± 0.5 mA FDE (Fault Disconnection Electronic) FoxCom Digital
Display	Multilingual Graphical LCD with full text display: display of valve position in %, actuator position in mm, inch or °, setpoint or loop current, travel sum and cycle counter etc. LEDs Mechanical Indicator (Standard)
Air Supply	1.4 to 6 bar (20 to 90 psig), or 1.4 to 7 bar (20 to 105 psig) high air capacity version
Stroke Range	8 to 260 mm (0.3 to 10.2 in) with standard lever
Angle of Rotation	up to 95 degree angle (optional up to 300 degree)
Protection Class	IP 65 (IP 66 on request), NEMA 4X
Electrical Classification	ATEX "Intrinsic safety" II 2 G EEx ia IIC T4 / T6 FM / CSA "Intrinsic safety" Class I, Div. 1, Groups A, B, C, D
Electrical Connection	M20 x 1.5 or 1/2-14 NPT (others with Adapter AD...)
Pneumatic Connection	G1/4 or 1/4-18 NPT
Ambient Temperature	-40 to +80 °C (-40 to +176 °F)
Weight	1.7 kg / 3.7 lbs (double acting: 2 kg / 4.4 lbs)
Optional Features (plug & play)	Inductive Limit Switches (2- or 3-wire) Mechanical Switches (Micro Switches) Position Transmitter (4 to 20 mA) Binary Inputs or Binary Outputs or Binary Inputs/Outputs dedicated to SIS logic solvers* External potentiometer (*e.g. TRICONEX)
Attachment to linear actuators	acc. to IEC 534 part 6 (NAMUR) and VDI/VDE 3847
rotary actuators	acc. to VDI/VDE 3845 and VDI/VDE 3847
any other linear or rotary actuator by means of extensive attachment kit offering	