



22 Chapman Way
Tunbridge Wells, Kent
TN2 3EF England

Tel: +44 (0) 1892 516277

Fax: +44 (0) 1892 516279

Email: sales@westlockuk.com

Website: www.westlockuk.com

2600 Exd IIC Accutrak Valve Position Monitor — Marketing Release May 2009





22 Chapman Way
Tunbridge Wells, Kent
TN2 3EF England

Tel: **+44 (0) 1892 516277**

Fax: **+44 (0) 1892 516279**

Email: sales@westlockuk.com

Website: www.westlockuk.com

Purpose of Document

From Monday 1st June 2009 all 2600 Series Valve Position Monitors that are for Explosionproof applications (Exd IIC ATEX and IEC) will be supplied with Internal assembly improvements and part number changes in line with previous Product releases.

Index

	Page Numbers
Overview of Changes	3
2600 Series Technical Sheet	4/5
2600 Series Part Number Matrix	6
Part Number Examples	7

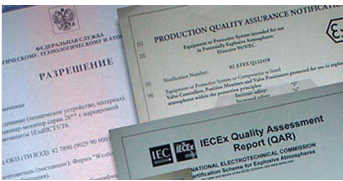


22 Chapman Way
Tunbridge Wells, Kent
TN2 3EF England

Tel: +44 (0) 1892 516277
Fax: +44 (0) 1892 516279
Email: sales@westlockuk.com
Website: www.westlockuk.com

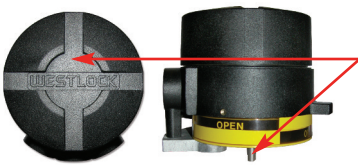
Overview of Changes

● Certification



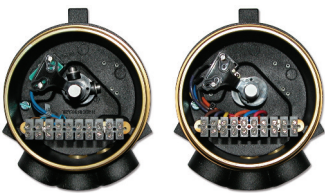
The 2600 Series ATEX approval has been updated to Exd IIC in line with Standards EN60079-0:2006, EN60079-1:2007, EN61241-0:2006 and EN61241-1:2006. The 2600 Series has also been listed as IEC Certified. The 2600 Series Product is also Gost (Russia), JIS (Japan) and Kosha (Korea) certified. The 2600 Series Stainless Steel option has been certified with an increased ambient temperature of -60 Degrees C to +85 Degrees C.

● Shaft Rationalisation:



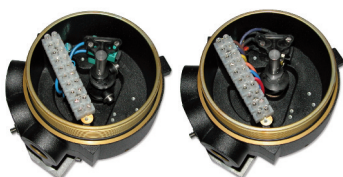
Along with a global shaft rationalisation strategy the 2600 Series shafts have been updated to include double O-Ring positions as standard.

● Centralisation Plate:



Standard supply of a centralisation plate for two switch products offers a product improvement with regards to the Linearity of the Shaft/Cam arrangement in line with the Switch/Sensor triggering position. This will allow more accurate setting of switches by fixing the shaft position while setting occurs.

● Inductive Proximity Cam Assembly:



With the above centralisation plate, tolerances allow an improvement to the Cam arrangement for the Inductive Proximity Sensor option within the 2600 series. This has incorporated a metallic 'slug' with an increased diameter and density that is located within the Cam to allow for improved accuracy when setting the sensors.



22 Chapman Way
Tunbridge Wells, Kent
TN2 3EF England

Tel: +44 (0) 1892 516277

Fax: +44 (0) 1892 516279

Email: sales@westlockuk.com

Website: www.westlockuk.com

Technical Information

Accutrak 2600 Series – Aluminium or Stainless Steel Exd IIC Explosionproof

The Westlock Accutrak 2600 Series is specifically engineered to meet hazardous area categories and gas groups. Certified to ATEX Standard, the unit has the flexibility to satisfy a wide range of diverse requirements. Employing standard Westlock design features such as Beacon Visual Indication, Touch Set Cams and pre-wired components, the 2600 Series is available with a wide range of sensing options.

The standard Aluminium enclosure contains 0.2% Copper and can be used in possible harsh environments. However, a fully 316L Stainless Steel alternate enclosure is also available meeting the same Hazardous Area approvals.

Certified Options Available

- Optional 316L Stainless Steel Enclosure
- Beacon Indicator options of; - Black / Yellow, Red / White, Blue / White, Green / White, 3 Way Flow Path Beacon Indicators, Various Languages
- M20, M25, 3/4"NPT Conduit Entry Options
- 2 or 3 Position Conduit Entries
- 1, 2, 3 or 4 x V3 Mechanical Switches SPDT Contacts
- 1, or 2 x DPDT Mechanical Switches
- 1, 2, 3 or 4 x V3 Inductive Proximity Sensors
- 1, 2, 3, or 4 x Magnum XT90 Hermetically Sealed Proximity SPDT Contacts
- Various other types of Switches and Sensors dependent on size – Please check with Office
- Namur or Westlock Standard Shaft
- Terminal Strips – Weco, Klippon, Kulka or Boshia
- 4-20Ma Transmitter for Position Feedback (CS)
- 10K Ohm Potentiometer for Resistive Signal (RS)

Technical Specifications

● ENCLOSURE

Material Specification	A360 (0.2% Copper Max) LM9
Finish	Irridited with Two Pack Polyurethane Enamel – Type F63 B13
Enclosure Temperature (Operating)	-40°C to +82°C
Certification Ambient	-20°C to +40°C

● BEACON INDICATOR

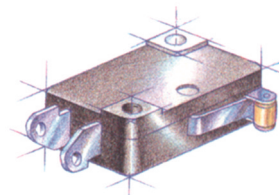
Material Specification	Ektar Copolyester
Temperature Limits	-40°C to +82°C

● SHAFT

Material Specification	303 Stainless Steel or optional 316 Stainless Steel
------------------------	--

● SENSORS/SWITCHES

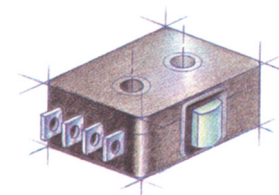
– V3 Mechanical Switches SPDT	Electrical Rating (SPDT):
	15amps / 125/250VAC
	.5amps / 125VDC
	6amps / 24VDC
	.25amps / 250VDC
	5amps / 125VAC
	Operating Temperature:
	-25°C to +148°C



	Hysteresis:
	3%

– DPDT Mechanical Switch

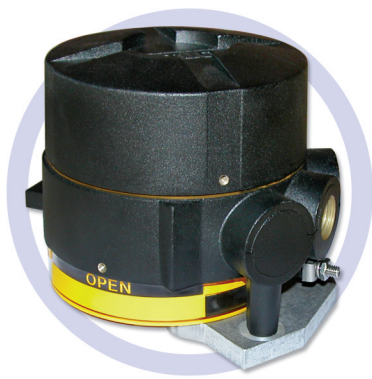
	Electrical Rating (DPDT):
	10amps / 125VAC
	10amps / 250VAC
	Operating Temperature:
	-25°C to +148°C



	Hysteresis:
	5%

– Pepperl & Fuchs (NJ2-V3-N)

	Input Voltage Range:
	5 – 25VDC

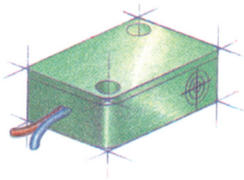


22 Chapman Way
Tunbridge Wells, Kent
TN2 3EF England

Tel: +44 (0) 1892 516277
Fax: +44 (0) 1892 516279
Email: sales@westlockuk.com
Website: www.westlockuk.com

Technical Information Continued

Accutrak 2600 Series – Aluminium Exd IIC Explosionproof



Output / Current Consumption:

≥1Ma - ≤3ma

Nominal Voltage:

8VDC

Switching Frequency:

1 KHz

Operating Temperature:

-25°C to +100°C

Hysteresis:

1%

– Magnum XT90 Hermetically Sealed

Electrical Rating:

3amps / 120VAC

1.5amps / 240VAC

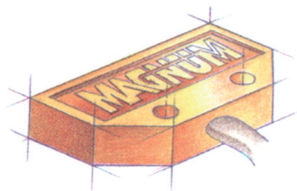
2amps / 24VDC

Operating Temperature:

-29°C to +93°C

Hysteresis:

6%



● **TERMINAL STRIP**

– Type	WECO Series 300 type 302
– Material Specification	Polymide
– Nominal Cross Section	1.5mm ²
– Wire Tripping Length	5mm

● **O-RINGS/GASKETS**

– Material Specification	Buna N
--------------------------	--------

● **CIRCLIPS & FASTENERS**

– Material Specification	Stainless Steel
--------------------------	-----------------

● **CERTIFICATION APPLICABLE**



Certificate Number:	EPSILON 08 ATEX 2372X
Approval Detail:	Ex II 2 G Exd IIC T* Tamb -*°C to *°C (See schedule on Atex Certificate)
	Ex tD A21 IP6X T*°C

● **CERTIFICATION APPLICABLE**



IECEX

Certificate Number:	IEC EX ITS 09.0001X
---------------------	---------------------

● **NORTH AMERICAN EQUIVALENT UNITS**

Model Numbers	360, 366
---------------	----------



22 Chapman Way
Tunbridge Wells, Kent
TN2 3EF England

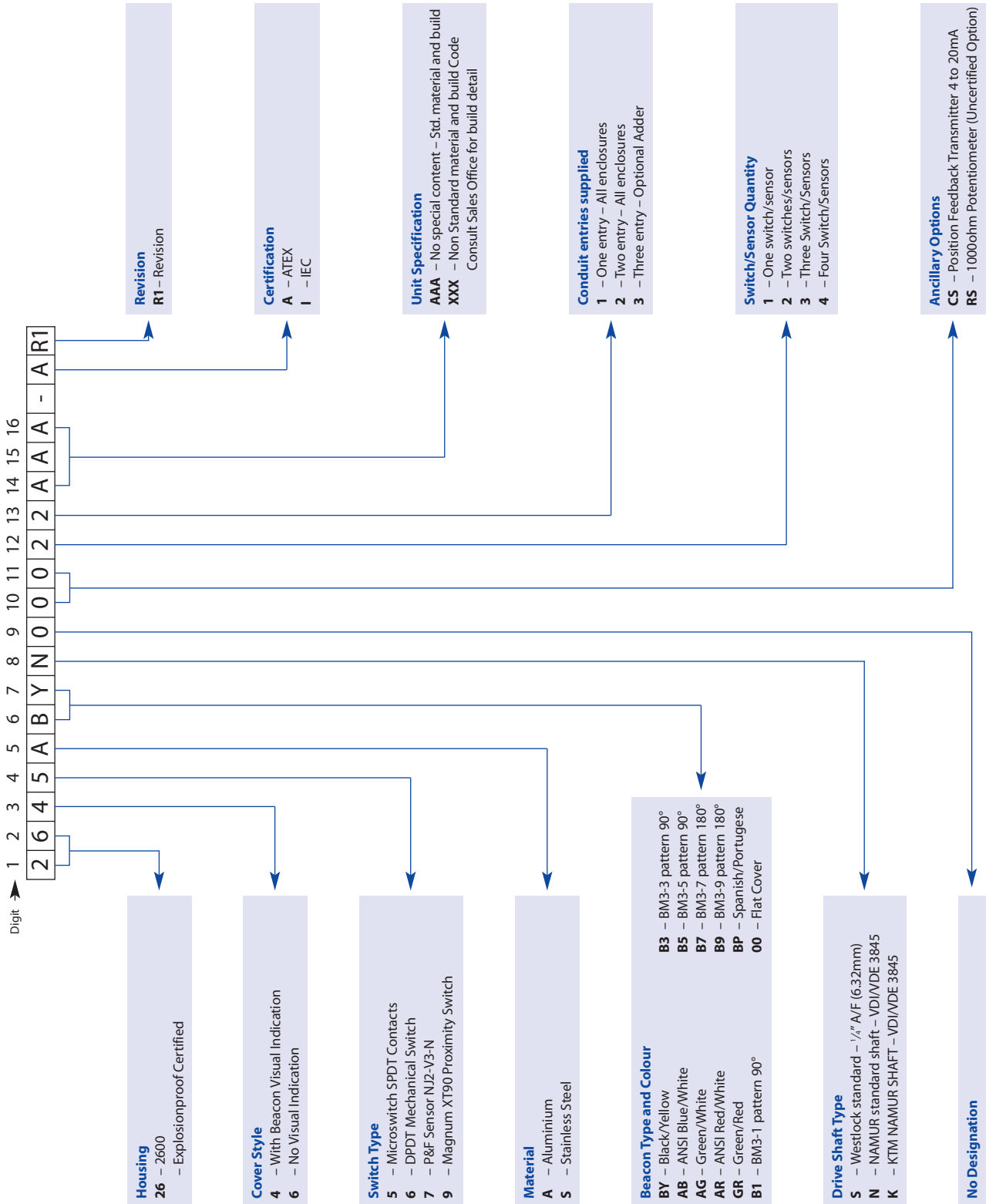
Tel: +44 (0) 1892 516277

Fax: +44 (0) 1892 516279

Email: sales@westlockuk.com

Website: www.westlockuk.com

2600 Series Accutrak Coding





22 Chapman Way
Tunbridge Wells, Kent
TN2 3EF England

Tel: **+44 (0) 1892 516277**

Fax: **+44 (0) 1892 516279**

Email: sales@westlockuk.com

Website: www.westlockuk.com

Part Number Examples

2600 Series Aluminium Exd IIC Aluminium Enclosure

Description: Westlock Aluminium 2600 Series, Black / Yellow Indicator, Namur Shaft, 2 x M20 Conduits Entries, 2 x V3 Mechanical Switches SPDT Contacts pre-wired to Terminal Strip. Unit ATEX certified Ex II 2 G Exd IIC T6.

Part Number: 2645A-BY-N-000-22AAA-AR1

2600 Series Stainless Steel Enclosure

Description: Westlock Stainless Steel 2600 Series, Black / Yellow Indicator, Standard Shaft, 2 x M20 Conduit Entries, 2 x Magnum XT90 Hermetically Sealed Proximity Switch SPDT Contacts pre-wired to Terminal Strip. Unit ATEX Certified Ex II G Exd IIC T6.

Part Number: 2649S-BY-S-000-22AAA-AR1

2600 Series Aluminium Enclosure

Description: Westlock Aluminium 2600 Series, Black / Yellow Indicator, Namur Shaft, 2 x M20 Conduits Entries, 2 x Pepperl & Fuchs NJ2-V3-N Inductive Proximity Sensors pre-wired to Terminal Strip. Unit IEC certified.

Part Number: 2647A-BY-N-000-22AAA-IR1