

# Uniflow®



Y-Strainers Cast Iron  
EN/DIN-Series 630N & 900  
[www.comeval.es](http://www.comeval.es)



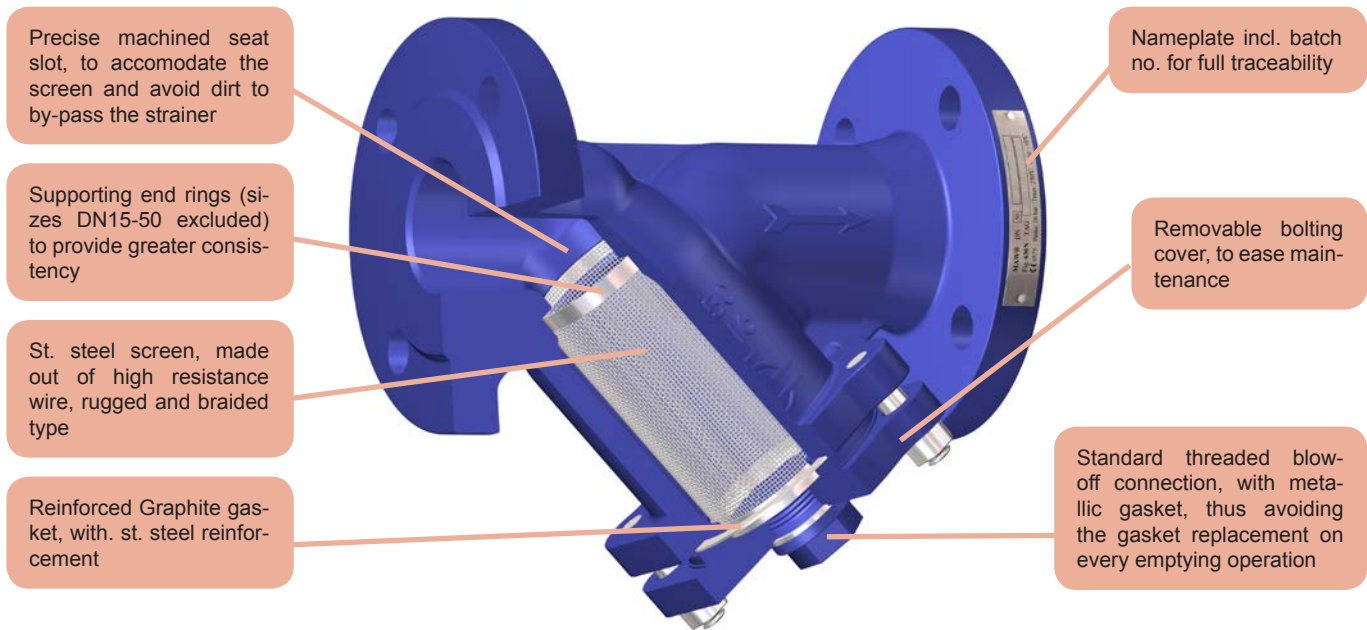
Data subject to change without prior notice

CONTENTS

**TYPE 630N**..... **4**  
 Main Features ..... 4  
 Main Duties / Limits of use ..... 4  
 Options ..... 4  
 Main Parts and Materials..... 5  
 Main Valve Parameters ..... 5  
**TYPE 900** ..... **6**  
 Main Features ..... 6  
 Main Duties / Limits of use ..... 6  
 Options ..... 6  
 Main Parts and Materials..... 7  
 Main Valve Parameters ..... 7  
**Assembling Kit specification for Strainers and Valves** ..... **8**

## TYPE 630N

UNIFLOW® Flanged Y-Strainers type 630N are devices for mechanically removing solids from flowing media by means of a wired mesh, replaceable in line. They combine a rugged and compact design for indoors installation in industrial plants, building industry, etc.



### Main Features

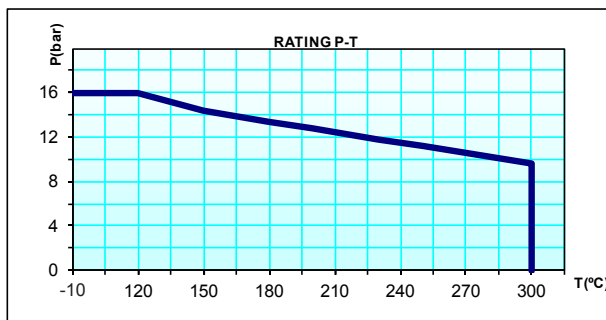
- Valve design: EN 12516
- Nominal pressure: PN16
- Face to face length: EN 558 S1 (DIN 3202 F1)
- End connections: Flanged to EN 1092-2 type 21/B PN16 (valves DN65 with 4 holes as accepted variant in standard)
- Marking: EN 19
- Pressure Tests: EN 12266-1
- Inside and outside primer paint layer blue color similar to RAL5002 for protection during storage and transport.
- Product compliant with Directive 2014/68/EU on Pressure Equipment (PED)

### Main Duties / Limits of use

- Fresh water and neutral liquids of group 2\*, acc. to Directive 2014/68/EU, Annex II table 9 up to category I
- Low pressure steam, neutral gases of group 2\* acc. to Directive 2014/68/EU, Annex II table 7 up to category I
- Table 7: PS 16 bar DN15-DN200 (Art.4-Parr.3 DN15-DN50)  
PS 13 bar DN250  
PS 11.5 bar DN300
- Table 9: PS 16 bar DN15-DN300 (Art.4-Parr.3)
- TS: -10/300°C
- Questions referring to chemical resistance, please consult us
- Observe also pressure/temperature limits on diagram
- \*Classification of fluids (group 2) acc. to Directive 2014/68/EU, Article 13

P (bar)	16	16	14,4	13,4
T (°C)	-10	120	150	180

P (bar)	12,8	11,8	11,2	9,6
T (°C)	200	230	250	300



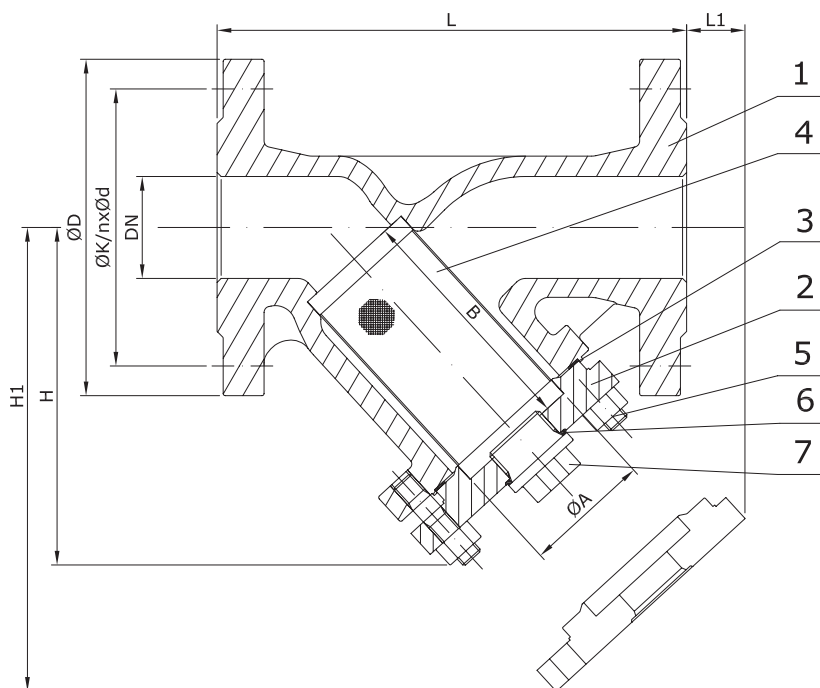
### Options

- Other screen width, special screen for vacuum service or in suction side of pumps, etc.
- Other designs and approvals, please consult us.



**TYPE 630N**

**Main Parts and Materials**



Nº	PART	MATERIAL
1	BODY	Cast iron EN-JL1040 (GG25)
2	COVER	Cast iron EN-JL1040 (GG25)
3	GASKET	Graphite-St. steel
4	SCREEN	St. steel 1.4541
5	STUDS-NUTS	Steel A307B/A503A
6	DRAINING PLUG GASKET	Steel A307B
7	DRAINING PLUG	Ductile iron EN-JS1030 (GGG40)

**Main Valve Parameters**

DN	15	20	25	32	40	50	65
L	130	150	160	180	200	230	290
H	90	100	115	125	150	160	180
H1	135	150	180	205	235	250	285
L1	10	10	25	35	45	45	25
ØA	23	28	36	42	50	61,5	78,5
B	56	68	82	98	114	119	134
ØD	95	105	115	140	150	165	185
ØK	65	75	85	100	110	125	145
nxØd	4x14	4x14	4x14	4x18	4x18	4x18	4x18
Plug (BSPT)	3/8"	3/8"	3/4"	3/4"	1"	1"	1"
Standard screen width	1	1	1	1	1	1	1,25
Kvs-value	6,7	10,5	17,2	25,3	35,6	59,2	95,6
Approx. Weight	2,5	4	5	7	9,5	12,5	17

DN	80	100	125	150	200	250	300
L	310	350	400	480	600	730	850
H	215	235	275	305	390	540	680
H1	330	365	425	480	610	915	1110
L1	40	55	65	50	80	230	350
ØA	89,5	109,5	137,5	160	210	258	308
B	149	169	199	224	284	434	555
ØD	200	220	250	285	340	405	460
ØK	160	180	210	240	295	355	410
nxØd	8x18	8x18	8x18	8x22	12x22	12x26	12x26
Plug (BSPT)	1"	1"	1"	1"	1"	1"	1"
Standard screen width	1,25	1,6	1,6	1,6	1,6	1,6	1,6
Kvs-value	142	227	365,3	382,9	632,7	1188,2	1816,8
Approx. Weight	21,5	29	42	61	118	157	258

Dimensions in mm subject to manufacturing tolerance / Kvs-values in m³/h / Weights in kg

Information / restriction of technical rules need to be observed!  
 Installation, Operating and Maintenance Manual can be downloaded at [www.comeval.es](http://www.comeval.es)

The engineer, designing a system or a plant, is responsible for the selection of the correct valve  
 Product suitability must be verified, contact manufacturer for information

## TYPE 900

UNIFLOW® Threaded Y-Strainers series 900 are devices for mechanically removing solids from flowing media by means of a perforated screen, replaceable in line. They combine a rugged and compact design for indoors installation in industrial plants, building industry, etc.



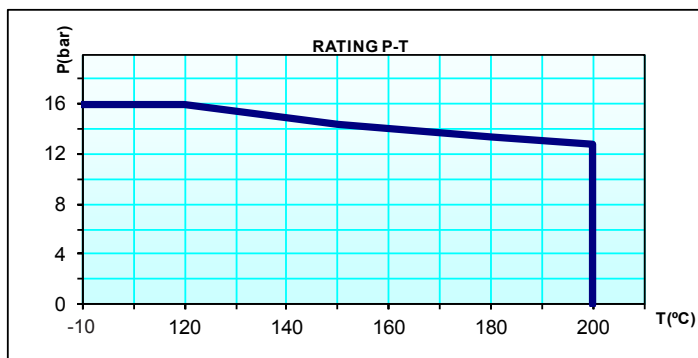
### Main Features

Valve design: EN 12516  
 Nominal pressure: PN16  
 End connections: Female thread to ISO 228-1 (DIN 259-BSPP)  
 Marking: EN 19  
 Pressure Tests: EN 12266-1  
 Inside and outside primer paint layer black color for protection during storage and transport  
 Product compliant with Directive 2014/68/EU on Pressure Equipment (PED)

### Main Duties / Limits of use

Fresh water and neutral liquids of group 2\* acc. to Directive 2014/68/EU, Annex II table 9 up to category I  
 Low pressure steam, neutral gases of group 2\* acc. to Directive 2014/68/EU, Annex II table 7 up to category I  
 PS: 16 bar DN15-50 (Art.4-Parr.3)  
 TS: -10/200°C  
 Questions referring to chemical resistance, please consult us  
 Observe also pressure/temperature limits on diagram  
 \*Classification of fluids (group 2) acc. to Directive 2014/68/EU, Article 13

<b>P (bar)</b>	16	16	14,4	13,4	12,8
<b>T (°C)</b>	-10	120	150	180	200

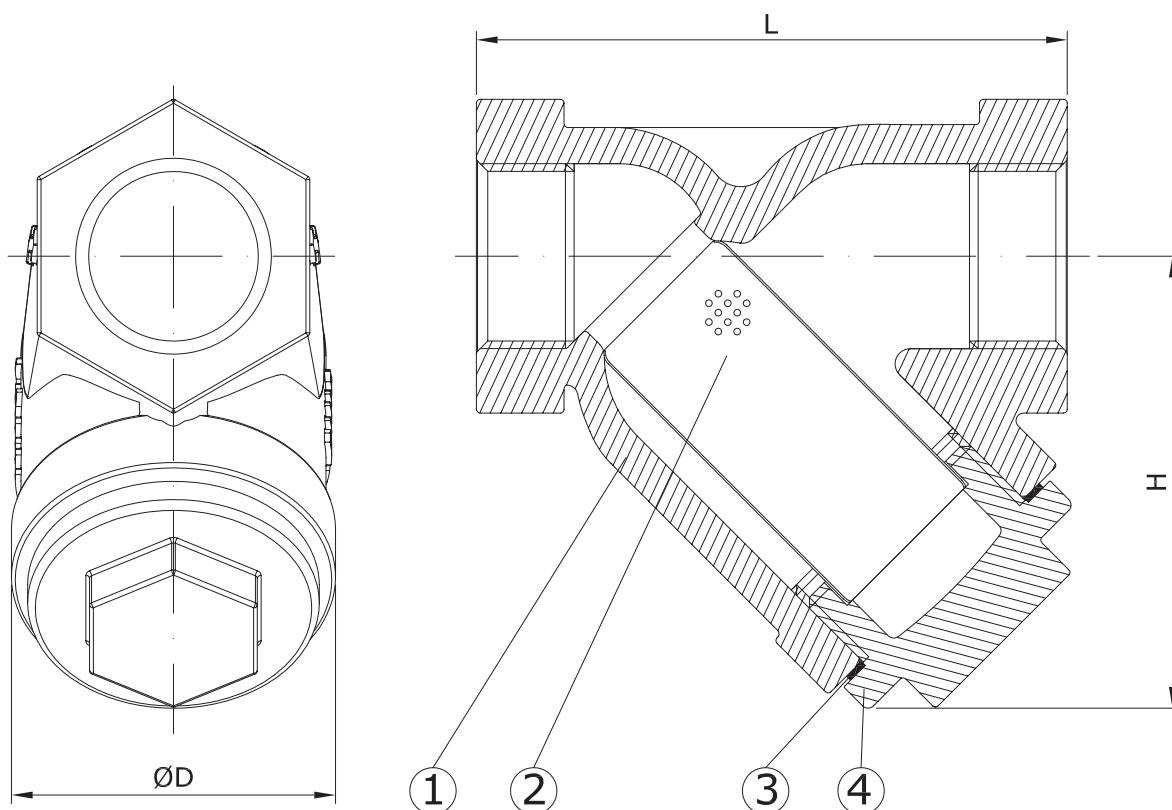


### Options

Other screen perforations, other connections, other designs and approvals, please consult us.

**TYPE 900**

**Main Parts and Materials**



N°	PART	MATERIAL
1	BODY	Cast iron EN-JL1040 (GG25)
2	SCREEN	St. steel 1.4541
3	GASKET	PTFE
4	COVER	Cast iron EN-JL1040 (GG25)

**Main Valve Parameters**

DN	15	20	25	32	40	50
NPS	1/2"	3/4"	1"	1 1/4"	1 1/2"	2"
L	90	104	118	138	154	193
H	65	70	85	105	115	140
ØD	44	51	55	70	85	102
Cover (BSPT)	G3/4"	G1"	G1"	G1-1/2"	G2"	G2-1/2"
Standard screen perforation	1	1	1	1	1	1
Kvs-value	6,7	10,5	17,2	25,3	35,6	59,2
Approx. Weight	1	1,5	2	2,5	4	6,5

Dimensions in mm subject to manufacturing tolerance / Kvs-values in m³/h / Weights in kg

**Assembling Kit specification for Strainers and Valves - DIN PN 10, PN 16, PN 25 and PN 40.**

**Flanged Strainers and Valves PN10**

DN	Bolts with nuts		Flanges PN10*	Gaskets
	Quantity	Size	Quantity	Quantity
15	8	M12x45	2	2
20	8	M12x50	2	2
25	8	M12x50	2	2
32	8	M16x55	2	2
40	8	M16x55	2	2
50	8	M16x60	2	2
65	8	M16x60	2	2
80	16	M16x65	2	2
100	16	M16x65	2	2
125	16	M16x70	2	2
150	16	M20x75	2	2
200	16	M20x80	2	2
250	24	M20x80	2	2
300	24	M20x80	2	2
350	32	M24x90	2	2
400	32	M24x90	2	2
450	40	M24x100	2	2
500	40	M24x100	2	2

\*Welding neck flanges EN 1092-1 11 PN10 (DIN2632)

**Flanged Strainers and Valves PN16**

DN	Bolts with nuts		Flanges PN16*	Gaskets
	Quantity	Size	Quantity	Quantity
15	8	M12x45	2	2
20	8	M12x50	2	2
25	8	M12x50	2	2
32	8	M16x55	2	2
40	8	M16x55	2	2
50	8	M16x60	2	2
65	8	M16x60	2	2
80	16	M16x65	2	2
100	16	M16x65	2	2
125	16	M16x70	2	2
150	16	M20x80	2	2
200	24	M20x80	2	2
250	24	M24x90	2	2
300	24	M24x90	2	2
350	32	M24x100	2	2
400	32	M27x100	2	2
450	40	M27x100	2	2
500	40	M30x110	2	2
600	40	M33x140	2	2

\*Welding neck flanges EN 1092-1 11 PN16 (DIN2633)

**Flanged Strainers and Valves PN25**

DN	Bolts with nuts		Flanges PN25*	Gaskets
	Quantity	Size	Quantity	Quantity
15	8	M12x50	2	2
20	8	M12x55	2	2
25	8	M12x55	2	2
32	8	M16x55	2	2
40	8	M16x55	2	2
50	8	M16x60	2	2
65	16	M16x65	2	2
80	16	M16x70	2	2
100	16	M20x70	2	2
125	16	M24x80	2	2
150	16	M24x90	2	2
200	24	M24x90	2	2
250	24	M27x100	2	2
300	32	M27x100	2	2
350	32	M30x110	2	2
400	32	M33x120	2	2
450	40	M33x130	2	2
500	40	M33x130	2	2
600	40	M36x150	2	2

\*Welding neck flanges EN 1092-1 11 PN25 (DIN2634)

**Flanged Strainers and Valves PN40**

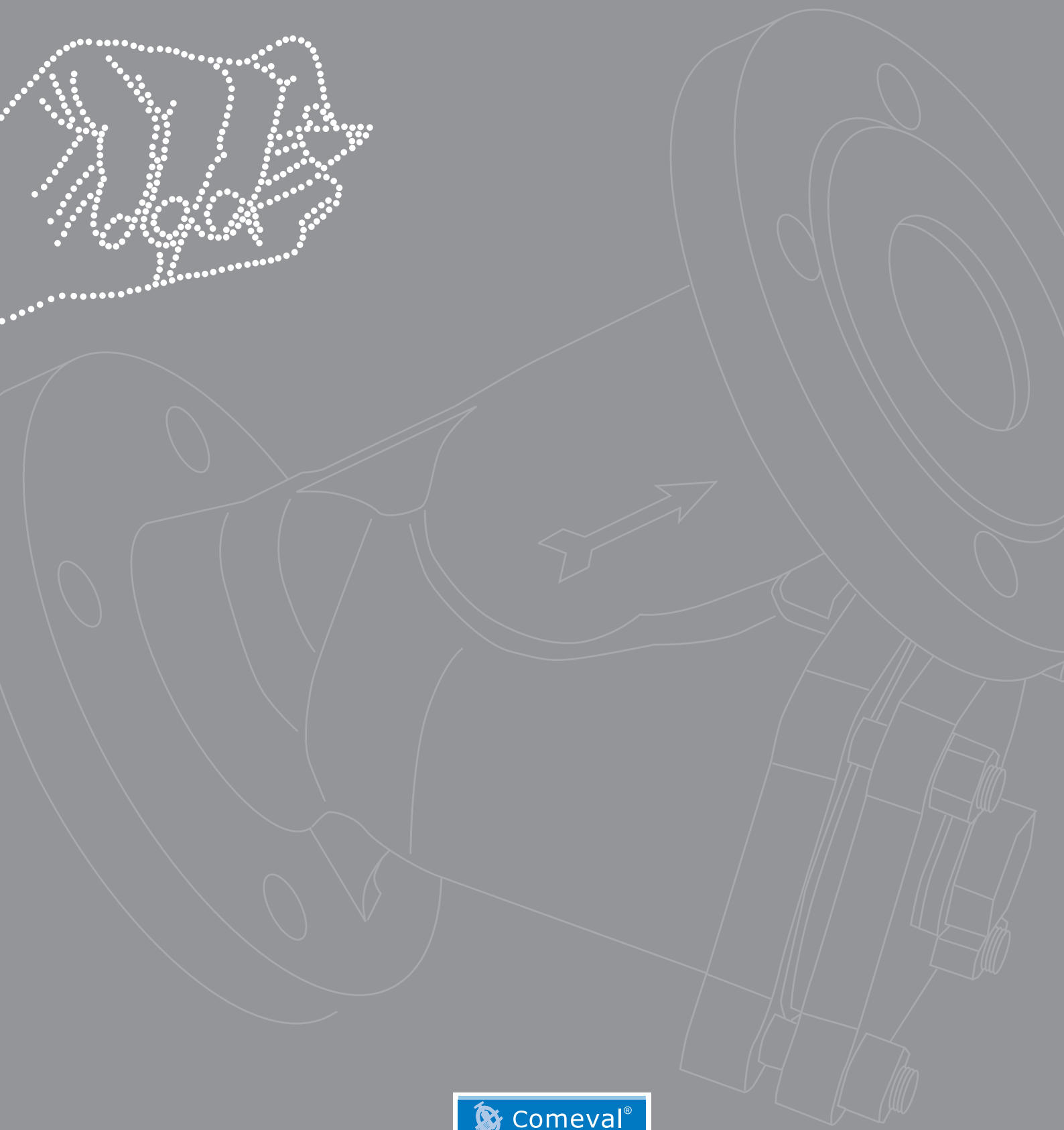
DN	Bolts with nuts		Flanges PN40*	Gaskets
	Quantity	Size	Quantity	Quantity
15	8	M12x50	2	2
20	8	M12x55	2	2
25	8	M12x55	2	2
32	8	M16x55	2	2
40	8	M16x55	2	2
50	8	M16x60	2	2
65	16	M16x65	2	2
80	16	M16x70	2	2
100	16	M20x70	2	2
125	16	M24x80	2	2
150	16	M24x90	2	2
200	24	M27x100	2	2
250	24	M30x110	2	2
300	32	M30x120	2	2
350	32	M33x130	2	2
400	32	M36x140	2	2
450	40	M36x150	2	2
500	40	M39x150	2	2
600	40	M45x190	2	2

\*Welding neck flanges EN 1092-1 11 PN40 (DIN2635)



Moulding the success.

Uniflow®



[www.comeval.es](http://www.comeval.es)